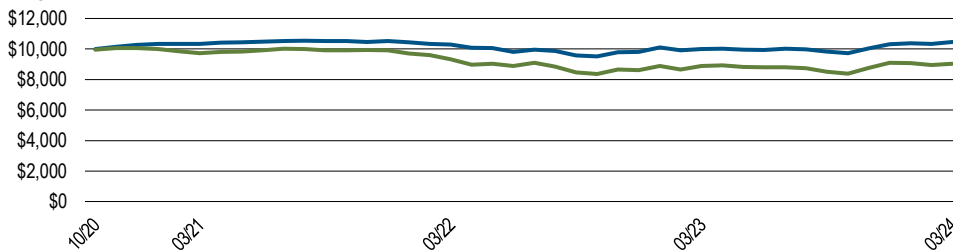


PIMCO ESG Income Fund

Attractive income potential with environment, social and governance awareness

The fund seeks to deliver income through a flexible, multi-sector approach, while focusing on ESG principles.

Hypothetical Growth of \$10,000



Growth of \$10,000 is calculated at NAV and assumes that all dividend and capital gain distributions were reinvested. It does not take into account sales charges or the effect of taxes. Results are not indicative of future performance.

Average annual total returns (%) as of 31 March 2024

	QTD	1 Yr.	3 Yrs.	SI
PIMCO ESG Income Fund A NAV	1.33	4.63	0.37	1.51
PIMCO ESG Income Fund A MOP	-2.44	0.72	-0.89	0.41
Benchmark	-0.78	1.70	-2.46	-2.88
Lipper Multi-Sector Income Funds	1.01	6.29	-0.35	-

Calendar Year (Net of Fees)

	2021	2022	2023	YTD
PIMCO ESG Income Fund A at NAV	2.56	-6.84	5.17	1.33
Benchmark	-1.54	-13.01	5.53	-0.78
Lipper Multi-Sector Income Funds	1.24	-10.82	7.84	1.01

Benchmark: Bloomberg U.S. Aggregate Index

Performance quoted represents past performance. Past performance is not a guarantee or a reliable indicator of future results. Investment return and the principal value of an investment will fluctuate. Shares may be worth more or less than original cost when redeemed. Current performance may be lower or higher than performance shown. For performance current to the most recent month-end, visit www.pimco.com or call (888) 87-PIMCO. The maximum offering price (MOP) returns take into account the 3.75% maximum initial sales charge.

Certain Funds may offer a share class with an inception date which is different than the inception date of the Fund. For the periods prior to the inception date of a share class, performance information is based on the performance of the Fund's oldest class shares, adjusted to reflect the fees and expenses paid by that class of shares. The performance figures presented reflect the total return performance, unless otherwise noted, and reflect changes in share price and reinvestment of dividend and capital gain distributions. All periods longer than one year are annualized. Periods less than one year are cumulative. The Lipper, Inc. Lipper Average is based on total return, with distributions reinvested and operating expenses deducted, though not reflecting sales charges. Fund classes share the same portfolio, but have different investment minimums and different fees and expenses.

Differences in the Fund's performance versus the index and related attribution information with respect to particular categories of securities or individual positions may be attributable, in part, to differences in the pricing methodologies used by the Fund and the index.

There is no assurance that any fund, including any fund that has experienced high or unusual performance for one or more periods, will experience similar levels of performance in the future. High performance is defined as a significant increase in either 1) a fund's total return in excess of that of the fund's benchmark between reporting periods or 2) a fund's total return in excess of the fund's historical returns between reporting periods. Unusual performance is defined as a significant change in a fund's performance as compared to one or more previous reporting periods.

A Shares	PEGAX	I-2 Shares	PEGPX
C Shares	PEGBX	I-3 Shares	PEGQX
INST Shares	PEGIX		

Fund Inception Date **30 September 2020**

Shareclass A Inception Date **30 September 2020**

Total Net Assets (in millions) **\$237.3**

Performance Characteristics

A 30-day SEC yield¹ **5.16%**

¹The 30 day SEC Yield is computed under an SEC standardized formula based on net income earned over the past 30 days.

Basic Facts

Dividend frequency **Monthly with Daily Accrual**

Fund Expenses

Maximum Sales Charge (Load) **3.75%**

Maximum Deferred Sales Charge (Load) **1.00%**

Class A shares are subject to an initial sales charge (as a percentage of offering price). A CDSC (as a percentage of the lower of the original purchase price or redemption price) may be imposed in certain circumstances on Class A shares that are purchased without an initial sales charge and then redeemed during the first 12 months after purchase. Class C shares are subject to a CDSC, which may apply in the first year.

A share Gross Expense Ratio **0.95%**

A share Adjusted Expense Ratio **0.91%**

The Adjusted Expense Ratio excludes certain investment expenses, such as interest expense from borrowings and repurchase agreements and dividend expense from investments on short sales, incurred directly by the Fund or indirectly through the Fund's investments in underlying PIMCO Funds (if applicable), none of which are paid to PIMCO.

Portfolio Managers

Daniel J. Ivascyn, Alfred Murata, Joshua Anderson, Jelle Brons, Jing Yang

Fund Statistics

Effective Duration (yrs) **3.36**

Effective Maturity (yrs) **5.43**

Volatility (3 year) **5.01%**

Sector Allocation (% Market Value)	Fund
US Government - Treasury ⁴	58.3
US Government - Agency ⁹	0.0
Swaps and Liquid Rates ⁰	-56.4
Securitized ⁶	70.0
Invest. Grade Credit	18.6
High Yield Credit	3.8
Non-USD Developed	-7.2
Emerging Markets ²	5.7
Municipal	0.0
Other ³	0.3
Net Other Short Duration Instruments ¹¹	6.9

Investors should consider the investment objectives, risks, charges and expenses of the funds carefully before investing. This and other information are contained in the fund's prospectus and summary prospectus, if available, which may be obtained by contacting your investment professional or PIMCO representative or by visiting www.pimco.com. Please read them carefully before you invest or send money.

⁴Includes U.S. Treasury notes, bonds, futures, and inflation-protected securities ⁹Includes U.S. agencies, FDIC-guaranteed and government-guaranteed corporate securities, and supranationals ⁰Includes U.S. dollar denominated interest rate swaps, swaptions, options, and other rate related derivatives. Other portfolio derivatives, where applicable, may be included as part of other sectors based upon their underlying risk characteristics. ⁶The Securitized bucket will include Agency MBS, nonAgency MBS, CMBS, ABS, CDO, CLO, and Pooled Funds. ¹¹Net Other Short Duration Instruments includes securities and other instruments (except instruments tied to emerging markets by country of risk) with an effective duration less than one year and rated investment grade or higher or, if unrated, determined by PIMCO to be of comparable quality, commingled liquidity funds, uninvested cash, interest receivables, net unsettled trades, broker money, short duration derivatives and derivatives offsets. With respect to certain categories of short duration securities, the Adviser reserves the discretion to require a minimum credit rating higher than investment grade for inclusion in this category. Derivatives Offsets includes offsets associated with investments in futures, swaps and other derivatives. Such offsets may be taken at the notional value of the derivative position. ²Short duration emerging markets instruments includes an emerging market security or other instrument economically tied to an emerging market country by country of risk with an effective duration less than one year and rated investment grade or higher or if unrated, determined to be similar quality by PIMCO. Emerging Markets includes the value of short duration emerging markets instruments previously reported in another category.

³Other may include convertibles, preferreds, and yankee bonds. Investments made by a Fund and the results achieved by a Fund are not expected to be the same as those made by any other PIMCO-advised Fund, including those with a similar name, investment objective or policies. A new or smaller Fund's performance may not represent how the Fund is expected to or may perform in the long-term. New Funds have limited operating histories for investors to evaluate and new and smaller Funds may not attract sufficient assets to achieve investment and trading efficiencies. A Fund may be forced to sell a comparatively large portion of its portfolio to meet significant shareholder redemptions for cash, or hold a comparatively large portion of its portfolio in cash due to significant share purchases for cash, in each case when the Fund otherwise would not seek to do so, which may adversely affect performance.

A word about risk: Investing in the **bond market** is subject to risks, including market, interest rate, issuer, credit, inflation risk, and liquidity risk. The value of most bonds and bond strategies are impacted by changes in interest rates. Bonds and bond strategies with longer durations tend to be more sensitive and volatile than those with shorter durations; bond prices generally fall as interest rates rise, and low interest rate environments increase this risk. Reductions in bond counterparty capacity may contribute to decreased market liquidity and increased price volatility. Bond investments may be worth more or less than the original cost when redeemed. Investing in **foreign denominated and/or domiciled securities** may involve heightened risk due to currency fluctuations, and economic and political risks, which may be enhanced in emerging markets. **Mortgage and asset-backed securities** may be sensitive to changes in interest rates, subject to early repayment risk, and their value may fluctuate in response to the market's perception of issuer creditworthiness; while generally supported by some form of government or private guarantee there is no assurance that private guarantors will meet their obligations. **High-yield, lower-rated, securities** involve greater risk than higher-rated securities; portfolios that invest in them may be subject to greater levels of credit and liquidity risk than portfolios that do not. **Equities** may decline in value due to both real and perceived general market, economic, and industry conditions. **Derivatives** may involve certain costs and risks such as liquidity, interest rate, market, credit, management and the risk that a position could not be closed when most advantageous. Investing in derivatives could lose more than the amount invested. **Diversification** does not ensure against loss. A Fund's **ESG investing strategy** may select or exclude securities of certain issuers for reasons other than financial performance. Such strategy carries the risk that the Fund's performance will differ from similar funds that do not utilize an ESG investing strategy. For example, the application of this strategy could affect the Fund's exposure to certain sectors or types of investments, which could negatively impact the Fund's performance. **ESG investing is qualitative and subjective by nature**, and there is no guarantee that the factors utilized by PIMCO or any judgment exercised by PIMCO will reflect the opinions of any particular investor, and the factors utilized by PIMCO may differ from the factors that any particular investor considers relevant in evaluating an issuer's ESG practices. In evaluating an issuer, PIMCO is dependent upon information and data obtained through voluntary or third-party reporting that may be incomplete, inaccurate or unavailable, or present conflicting information and data with respect to an issuer, which in each case could cause PIMCO to incorrectly assess an issuer's business practices with respect to its ESG practices. Socially responsible norms differ by region, and an issuer's ESG practices or PIMCO's assessment of an issuer's ESG practices may change over time. There is no assurance that the ESG investing strategy or techniques employed will be successful. Past performance is not a guarantee or reliable indicator of future results.

The Leadership in Energy and Environmental Design (LEED) certification, overseen by the U.S. Green Building Council, grades buildings sustainability and environmental impact. **Effective duration** is a measure of a portfolio's price sensitivity to interest rate changes, including expected changes in cash flows caused by embedded options. **Volatility** is measured by the standard deviation, or dispersion of a set of data from its mean, based on historical portfolio returns. A larger spread of data indicates higher standard deviation and higher volatility. **Effective maturity** is a weighted average of all the maturities of the bonds in a portfolio, computed by weighting each bond's effective maturity by the market value of the security. PIMCO ESG Income Fund is a diversified portfolio of fixed income securities that is actively managed to maximize current income while focusing on environmental-, social- and governance-oriented (ESG) principles.¹¹ Long-term capital appreciation is a secondary objective. Please see the Fund's prospectus for more detailed information related to its investment objectives, investment strategies and approach to ESG.¹¹ The Fund considers ESG factors to choose securities that comprise the fund and to proactively engage with issuers to realize ESG-objectives. Environmental ("E") factors can include matters such as climate change, pollution, waste, and how an issuer protects and/or conserves natural resources. Social ("S") factors can include how an issuer manages its relationships with individuals, such as its employees, shareholders, customers and its community. Governance ("G") factors can include how an issuer operates, such as its leadership, pay and incentive structures, internal controls, and the rights of equity and debt holders.

MV% may not equal 100 due to rounding. Portfolio structure is subject to change without notice and may not be representative of current or future allocations. Bloomberg U.S. Aggregate Index represents securities that are SEC-registered, taxable, and dollar denominated. The index covers the U.S. investment grade fixed rate bond market, with index components for government and corporate securities, mortgage pass-through securities, and asset-backed securities. These major sectors are subdivided into more specific indices that are calculated and reported on a regular basis. It is not possible to invest directly in an unmanaged index.

PIMCO as a general matter provides services to qualified institutions, financial intermediaries and institutional investors. Individual investors should contact their own financial professional to determine the most appropriate investment options for their financial situation. This material contains the current opinions of the manager and such opinions are subject to change without notice. Information contained herein has been obtained from sources believed to be reliable, but not guaranteed. No part of this material may be reproduced in any form, or referred to in any other publication, without express written permission. PIMCO is a trademark of Allianz Asset Management of America LLC in the United States and throughout the world. ©2024, PIMCO. PIMCO Investments LLC, distributor, 1633 Broadway, New York, NY, 10019 is a company of PIMCO.